

# WOODCRAFT CFMOTORSPORTS

105 Baldwinville Rd  
Winchendon, MA 01475  
(978)297-2977

[www.woodcraft-cfm.com](http://www.woodcraft-cfm.com)

## 05-0407 Yamaha FZ07 Rearset Instruction Sheet – Racing Use Only

Thank you for selecting CFMOTORSPORTS rearsets. Please note that these components are intended and approved for **racing use only**. As such, the footpegs are solid-mount.

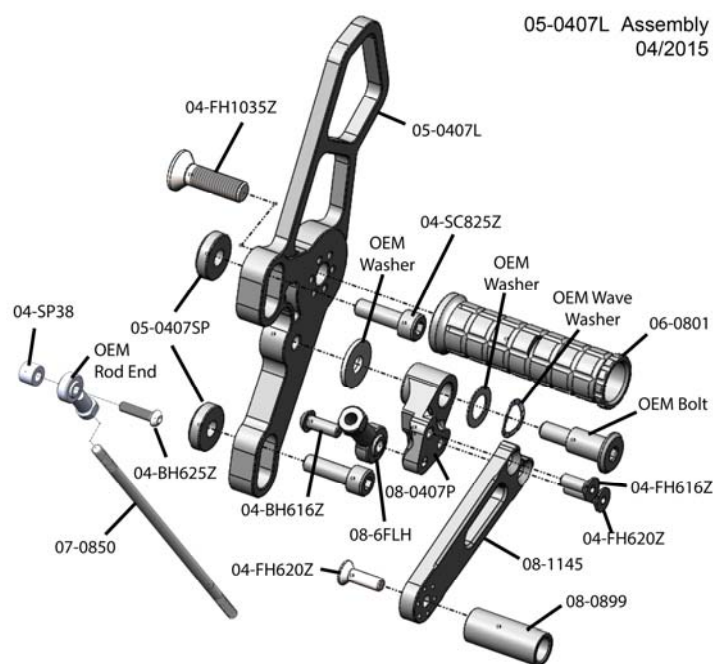
- 1) Remove stock rearsets, footpegs and associated hardware. All components that are re-used in this kit should be cleaned and inspected for damage before re-installation.

### **IMPORTANT**

Tighten all fasteners to factory specification or industry standard. **FAILURE TO PROPERLY TIGHTEN ALL FASTENERS MAY CAUSE DAMAGE TO THE MOTORCYCLE, LOSS OF CONTROL AND SERIOUS INJURY OR DEATH**

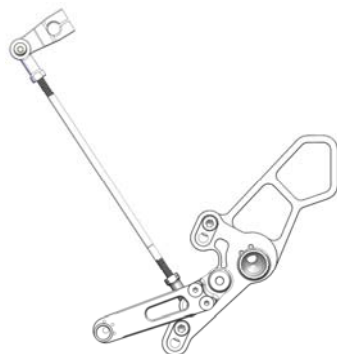
### Shift Side Assembly Installation

- 1) Bolt the CFM footpeg to the bracket using the included 10mm hardware. **IMPORTANT** - Secure bolt with LOCTITE.
- 2) Assemble the CFM shift pedal. Attach the heim joint, main shaft and toe peg using the supplied hardware. Test fit the bracket to the frame to determine the desired location for the pegs. **IMPORTANT** - Secure all bolts with LOCTITE.
- 3) Bolt the bracket to the frame, placing the 05-0407SP spacers between the bracket and the frame.
- 4) Attach the pedal to the bracket using the OEM hardware and wave washer. Be sure to apply quality waterproof grease to the surface of the pin. Bring the pedal to the desired height using a combination of the included shift rod and the eccentric toe piece. Be sure to lock the shift rod in place with the shift rod free-flow nuts.

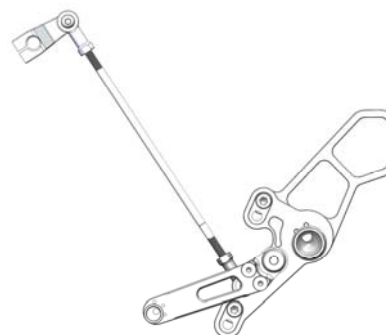


- 5) Refer to the photos below for the GP or Std shift orientation. You must orient the shift pedal, shift rod and spline (the part on the engine) so that they are oriented as close to 90 degrees as possible for optimum shifting action.
- 6) GP Shift Only – Un-bolt the OEM rod end and place the 04-SP38 spacer between the rod end and the OEM shift arm. Re-attach the rod end to the spline using the included 6 x 25 button head bolt. **IMPORTANT**- Secure bolt with LOCTITE.

### Standard Shift



### GP Shift

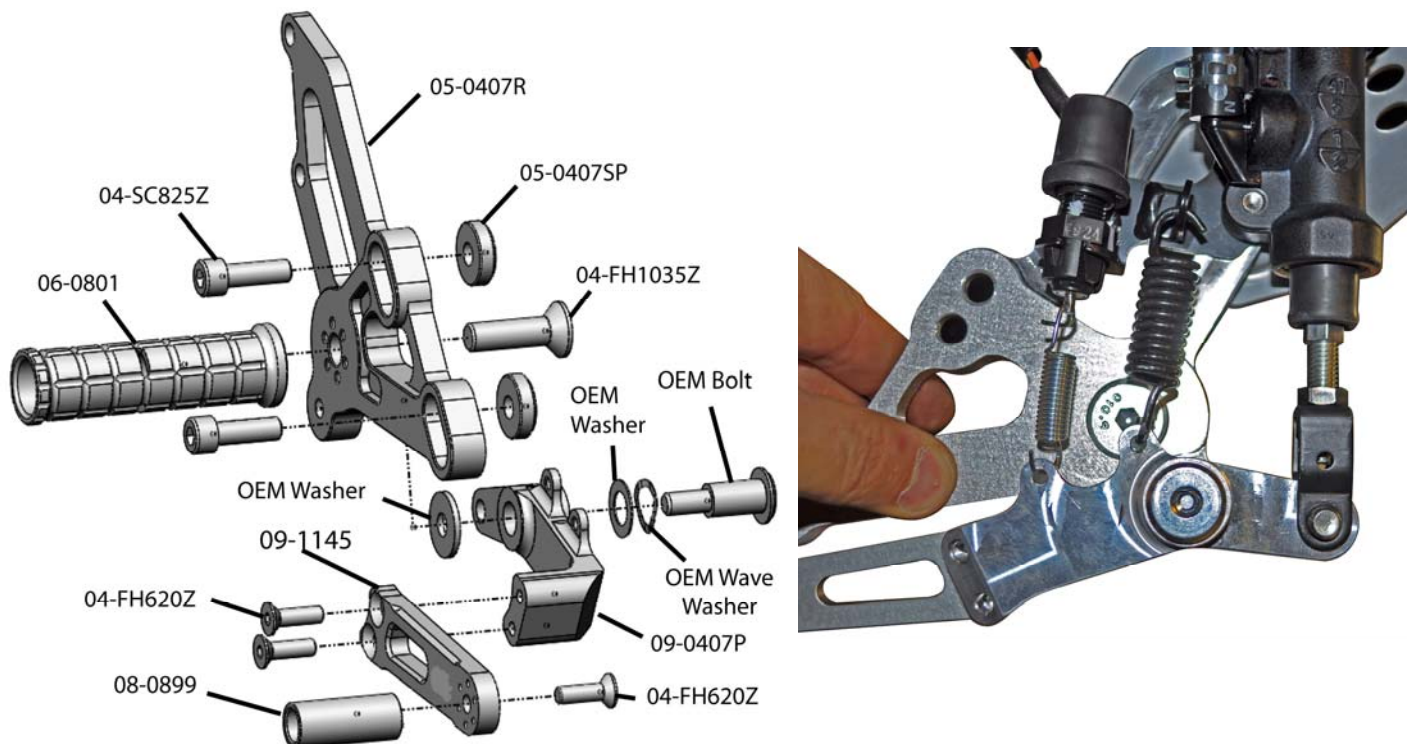


## Brake Side Assembly Installation

- 1) Bolt the CFM footpeg to the bracket using the included 10mm hardware. **IMPORTANT** - Secure with LOCTITE
- 2) Assemble the main shaft to the CFM brake pedal. **IMPORTANT** - Secure all bolts with LOCTITE. Be sure to apply quality waterproof grease to the surface of the 09-0407P brake pivot.
- 3) Attach the brake pedal to the back of the bracket using the OEM bolt and all of the stock washers. **IMPORTANT** - Secure the OEM bolt with LOCTITE.
- 4) Bolt the master cylinder and OEM heel guard to the bracket using the OEM bolts (not shown). Attach the master cylinder to the brake pedal using the stock hardware and adjust the brake pedal to your desired height using the eccentric toe peice and the OEM adjuster at the base of the master cylinder. **IMPORTANT** – Secure 08-0899 toe peg with LOCTITE after you have selected your final choice for position.

**NOTE:** This kit can utilize the OEM brake return spring and brake light switch. Simply place the OEM support bracket for these items between the master cylinder and the bracket (as is done on the stock rearsets) and hook the springs to the CFM pedal.

- 5) Bolt the bracket to the frame, placing the 05-0407SP spacers between the bracket and the frame.



**BE SURE THAT ALL COMPONENTS OPERATE AND RETURN FREELY BEFORE USE** If you have any questions regarding installation, please feel free to contact us.

### **IMPORTANT**

Installation and use of this product will change the response of the motorcycle to rider control inputs. Failure of the rider to adapt to these changes may result in a loss of control, and serious injury or death. Improper installation and/or failure to comply with all warnings and instructions may cause a loss of control and serious injury or death. **DO NOT INSTALL OR USE THIS PRODUCT IF YOU ARE UNABLE TO DO SO IN COMPLIANCE WITH ALL INSTRUCTIONS AND WARNINGS. SEEK THE ASSISTANCE OF A TRAINED PROFESSIONAL TECHNICIAN.** Installation of this product releases the Woodcraft Technologies, Inc. from all liabilities as to the use of this product. The user recognizes that any alteration or modification to any motorcycle may increase the risk of injury or accident and may also render the motorcycle illegal for public road use