



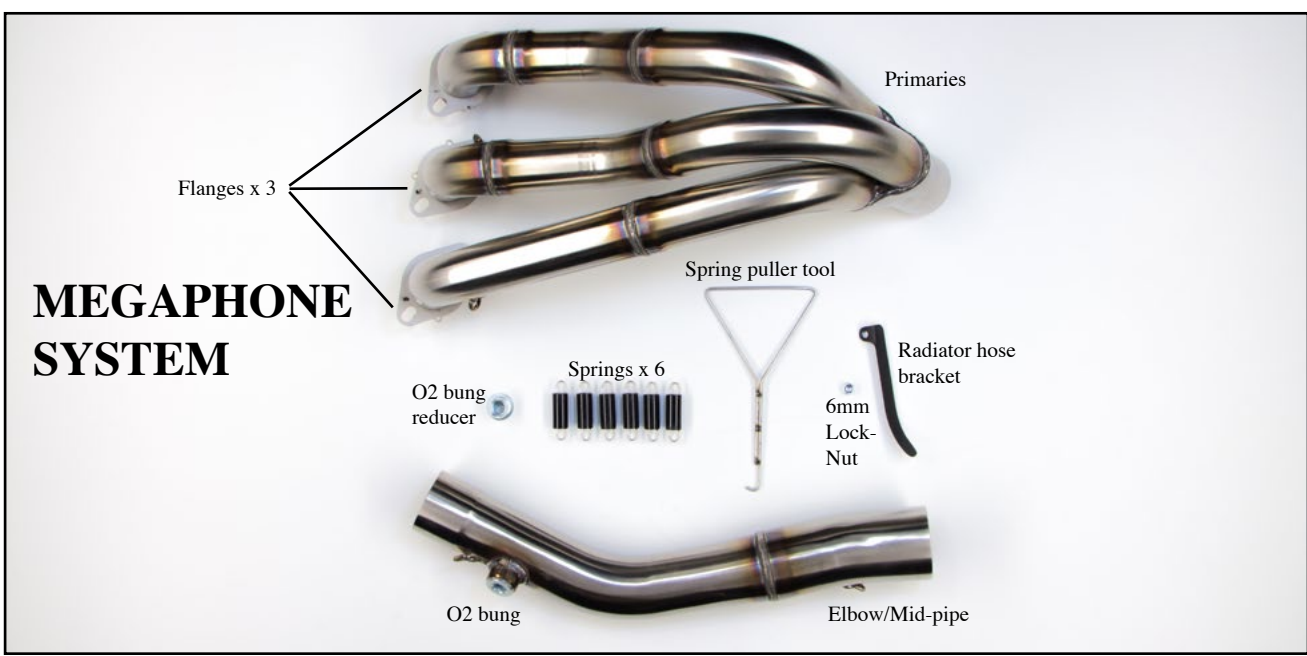
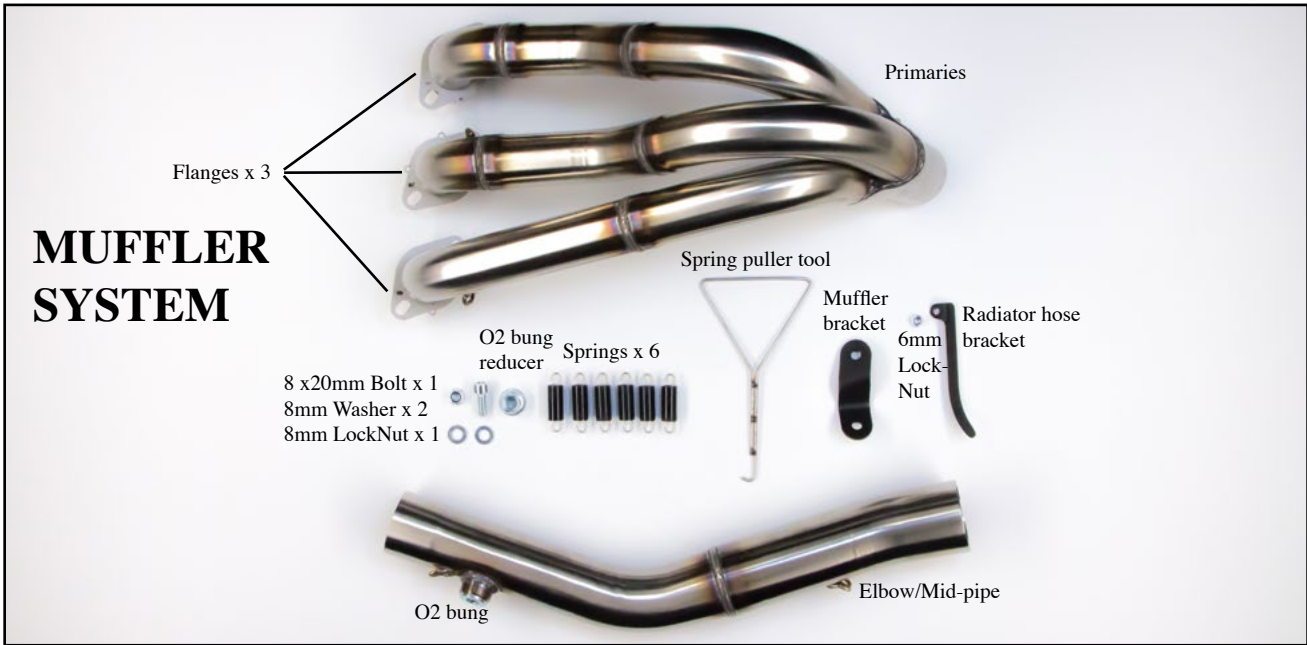
140 North Port Road, Port Perry, Ontario, Canada, L9L 1B2
 Tel.: 905-985-6111 | Fax: 905-985-7349 | E-Mail: info@hindle.com
 WWW.HINDLE.COM

FEEL MORE POWER.

Installation Instructions for TRIUMPH STREET TRIPLE 765 (2017-2019) Full System

To install the 2017-2019 TRIUMPH STREET TRIPLE 765 FULL SYSTEM proceed with the following directions:

Caution: Do not install exhaust while engine is running, and/or is hot to the touch. Thoroughly read and review all steps of installation instructions to ensure proper installation. If you have any questions about installation, please contact us at 905-985-6111 and we would be happy to help.





Evolution Muffler Installed



Evolution Megaphone Installed

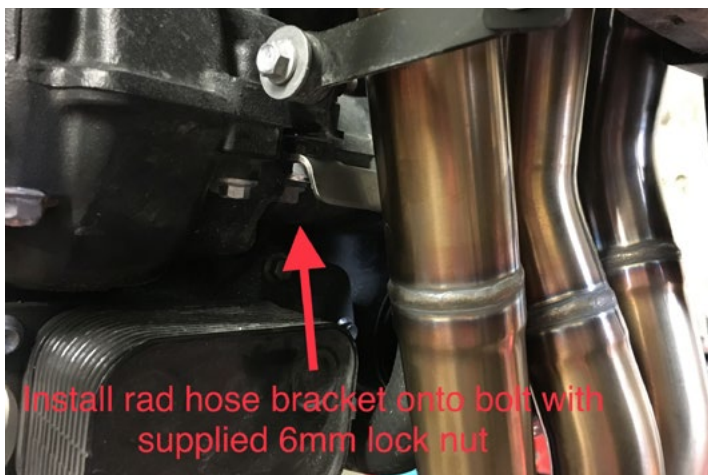
Step 1: Remove stock exhaust, as per owner's manual. Install flanges and springs onto cylinder head. They are numbered 1 to 3 on each flange plate. *See Image 1.*



Install flanges and springs onto cylinder head. They are numbered.

Image 1

Step 2: Install radiator hose bracket onto bolt using the supplied 6mm lock nut. *See Images 2 & 3.*



Install rad hose bracket onto bolt with supplied 6mm lock nut

Image 2



Rad hose bracket mounted in front of rad hose

Image 3

Step 3: Install headers onto flanges with springs. *See Image 4.*

Step 4: Install elbow/mid-pipe onto front primaries. Line up spring tabs on elbow to primaries and install spring.

Step 5: Install the stock O2 sensor into the elbow/mid-pipe using the supplied O2 reducer. *See Image 5.*

Step 6: *For Evolution or Oval muffler installation,* remove protective film on muffler strap. Install protective rubber band inside of the muffler strap making sure that the strap is inside of the outer edge of the rubber.

Step 7: *For Evolution or Oval muffler installation,* use the supplied bracket and attach to the driver's footpeg using the stock bolt and stock nut. Then, attach the muffler strap to the bracket with the supplied 8x20mm bolt, washer and nut. When installing the muffler strap, both sides of the top of the strap should be pinched together on one side of the mount. *See Image 6.*

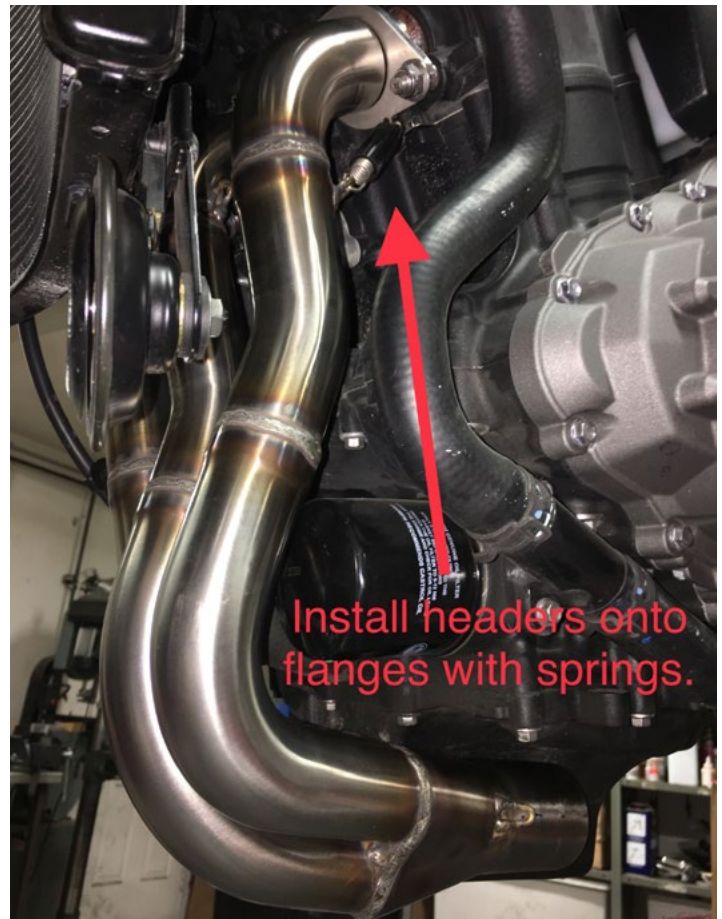


Image 4

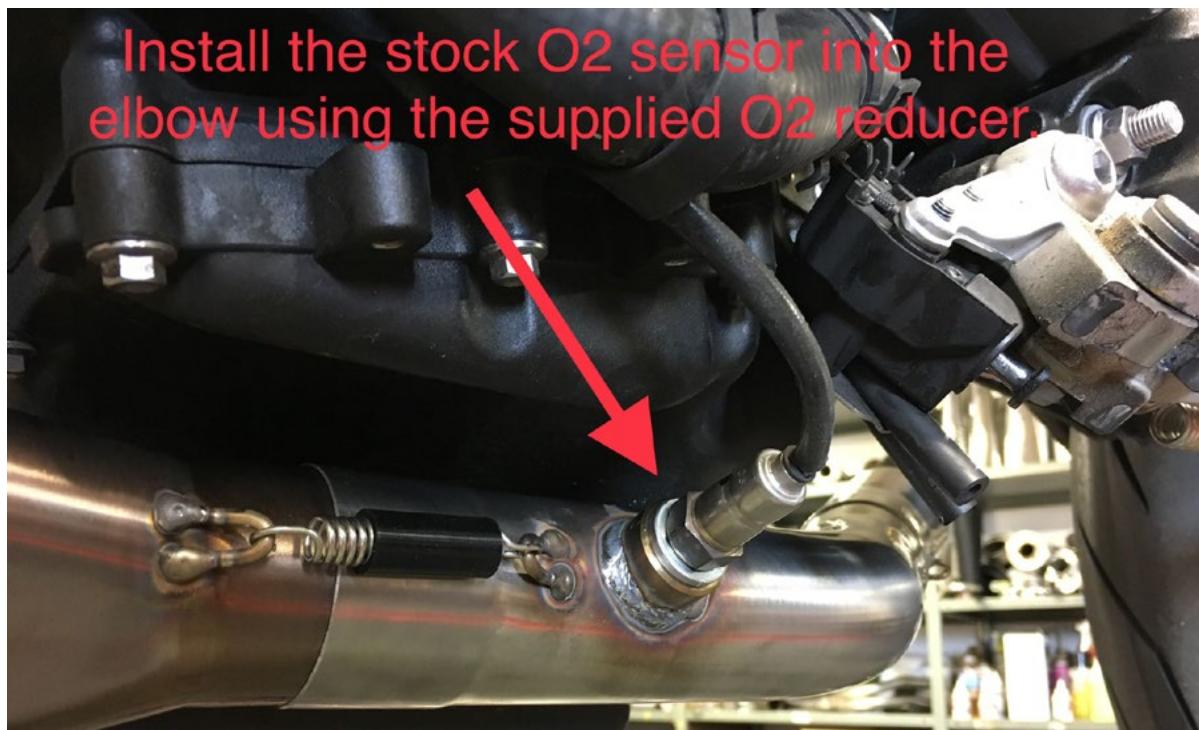


Image 5

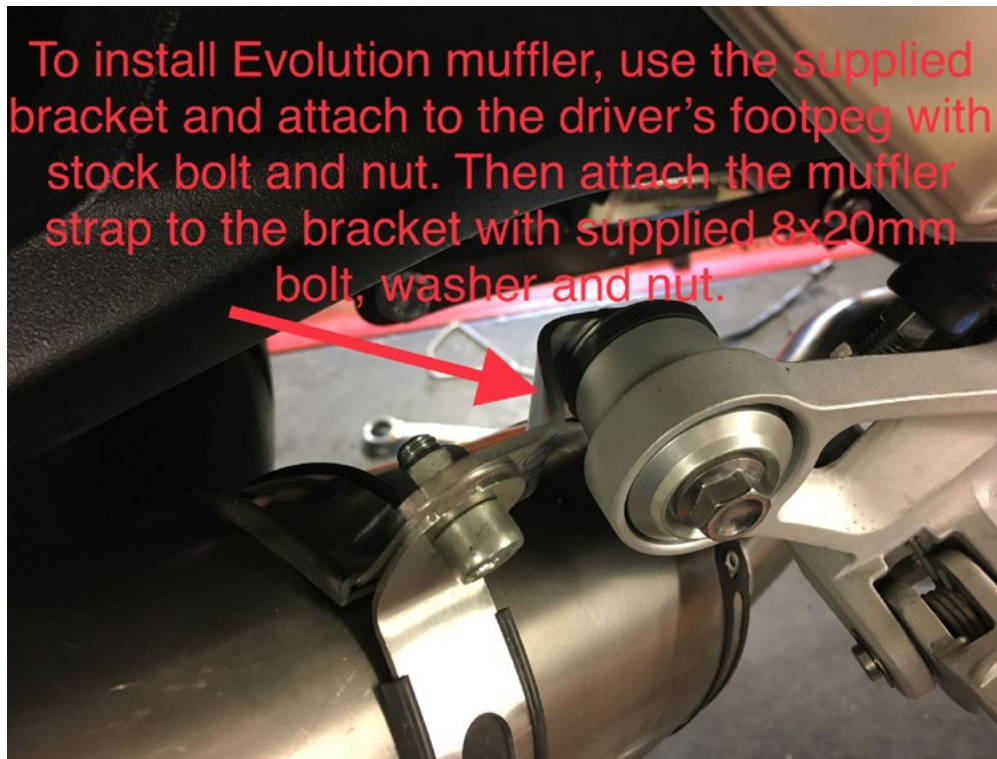


Image 6

Step 8: *For Evolution Megaphone installation*, mount to original stock location on the backside of the driver's footpeg. *See Image 7.*

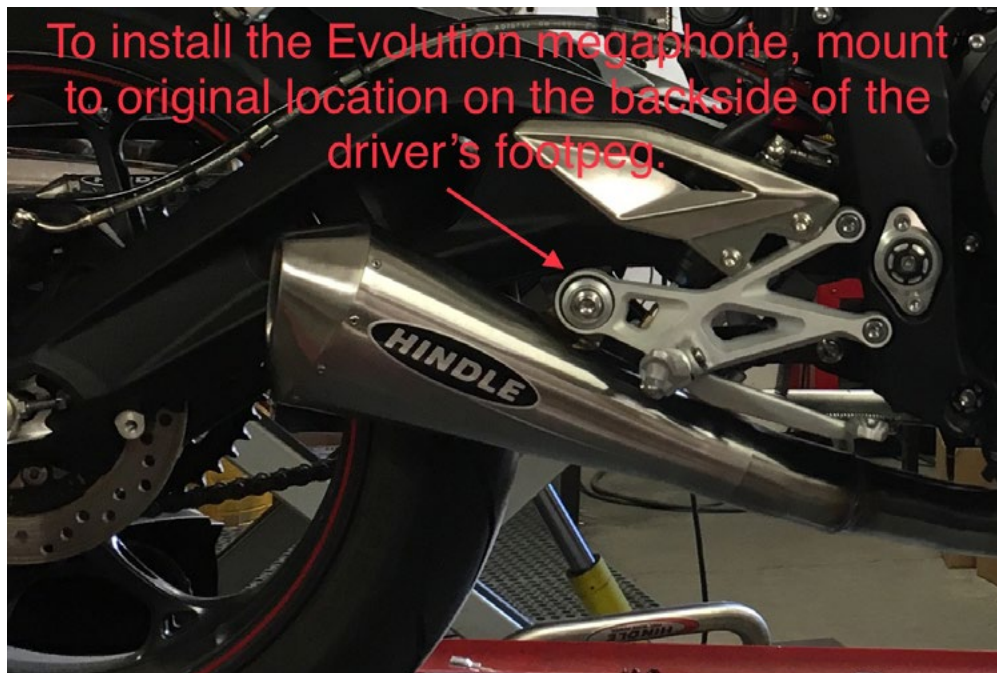


Image 7

Enjoy the quality and performance of your new Hindle Exhaust System!

Step 9: **VERY IMPORTANT** A break-in procedure must be performed for new Hindle mufflers. Once installed, Hindle muffler must be warmed up by running the engine at idle for 15 minutes. Hindle muffler should then be left to cool down for 15 minutes. This process will help prolong the life of your Hindle muffler by helping set the internal muffler packing before first use. **Please note: Hindle mufflers require general maintenance: repacking of the muffler should be done, when required. Repacking will help protect the muffler's outer shell, as well as noise and exhaust emissions.**



WARNING

Exhaust system(s) and muffler(s) may be hot when engine is/has been running. Take preventative measures with the handling of any Hindle system or Hindle muffler. Allow the engine to cool before installing or removing the exhaust system and/or muffler. Severe burns, bodily injury and/or death may occur.



WARNING

Keep flammable materials away from exhaust at all times.



WARNING

Exhaust gas contains poisonous carbon monoxide that can rapidly accumulate in an enclosed or poorly ventilated area. If inhaled, it may cause serious injury or death. Start and run the motorcycle in a well-ventilated area.

WARNING: USA CUSTOMERS:

Certain states in the USA have individual laws regulating the use of aftermarket exhaust parts and systems, especially as those parts and systems modify, remove, or replace original equipment catalytic converters. Please become familiar with the appropriate laws in your area before installing any aftermarket part or system on your vehicle. to ensure compliance with all applicable laws. Hindle Products Ltd, Woodcraft Technologies Inc and any of their representatives, subsidiaries or the sellers of these parts or systems make any representation that any of their parts or systems comply with any of these laws for street use.

WARNING: CALIFORNIA CUSTOMERS:

California laws prohibit the use of any aftermarket exhaust part or system that modifies, removes or replaces original equipment catalytic converters on any vehicle intended for street use. In California these parts or systems are only exempted from this law when they are used exclusively on racing vehicles on closed courses. Neither Hindle Products Ltd, Woodcraft Technologies Inc nor any of their representatives or subsidiaries make any representation that any of their parts or systems are approved for street use in California. The purchasers of Hindle products are entirely responsible for informing themselves of applicable California laws and to comply with those laws.

12 MONTH LIMITED WARRANTY AND LIABILITY DISCLAIMER:

Hindle Products Ltd. warrants this product free from defects in material or workmanship for a period of 12 months from the date of purchase, except as noted. The product warranty does not cover damage caused by misuse or abuse; accident; the attachment of any unauthorized accessory; alteration to the product, improper installation, exposure to harsh weather and/or chemicals, lack of proper maintenance, or any other conditions that are beyond the control of Hindle Products Ltd. Hindle Products Ltd. shall not be responsible for any type of incidental, consequential, or special damages. All implied warranties, including but not limited to those warranties of fitness and merchantability, are limited in the total duration to 12 months from the original purchase date. Hindle will not warrant any product for fitment issues after the system has been ran on the motorcycle for any length of time. If the warranty occurs within 30 days from the date of purchase, please contact the dealer product was purchased from. Over 30 days from the date of purchase, please contact Hindle Products Ltd. direct at (905) 985-6111 before shipping the product. Customer must contact Hindle Products Ltd. prior to sending warranty product. Claims for lost shipment, damaged shipments, or other problems regarding freight must be made directly to the responsible carrier. To obtain warranty service on Hindle Exhaust System products, mail the product prepaid and a copy of your dated sales receipt (as proof of purchase), together with a note explaining the reason for repair to this item to: **Hindle Products Ltd., 140 North Port Road, Port Perry, Ontario, Canada, L9L 1B2.** Product being returned without notification prior to shipping will be overlooked. Upon receipt, Hindle Products Ltd. will repair or replace, as appropriate, your Hindle product and return it to you, post paid. Warranty is solely through Hindle Products Ltd. Service to our products by anyone other than Hindle Products Ltd. voids warranty. Hindle Products Ltd. disclaims any and all liability for consequential or incidental damages. Hindle Products Ltd. will not be held responsible for personal damage, bodily harm or any other legal matters.